

Platinum Flip Top Box



Platinum flip top box

Product Specification:-

Platinum flip top box Platinum flip top box from Connect System comes with double side brush to keep your wires and cables organized. Opens from both side which allow both side users in meeting Room to access the box easily. You can install electrical outlets of your choice in the recessed box. Moreover, Any Configuration of Modular Electrical Solution can be given in Platinum box.

Product Description:

- Durable and Aluminium Alloy shell
- Finish Available: Aluminium Anodised Finish, White, Black
- Pivot platinum box: Standard Size available: 250mm and 500 mm
- Length can be customized

Method of Fitting:-

Flushed with the table top by making the cut out in the table

Application

[Meeting Room](#)

[Conference Room](#)

[Board Room](#)

[Workstation](#)

[Cabin](#)



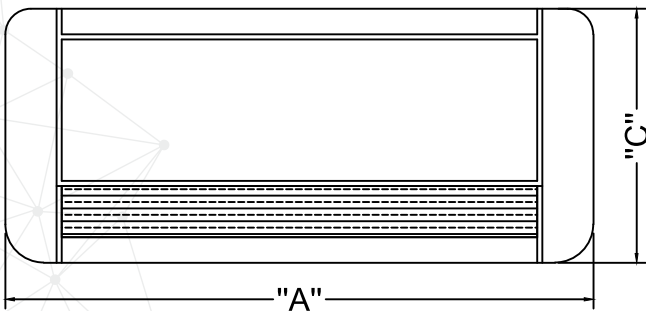


PLATINUM FLIP TOP BOX

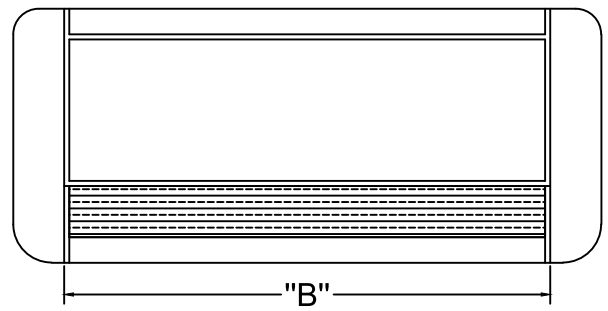
Platinum Flip Top Box Manual Installation



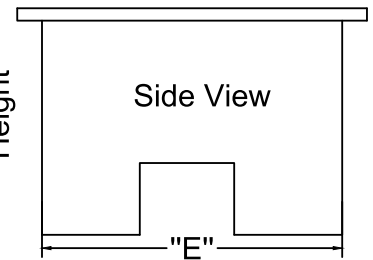
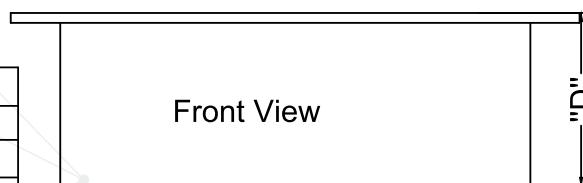
Outer Dimension



Cutout Dimension



	SIZE	
	250MM	500MM
A	275	525
B	258	508
C	144	144
D	100	100
E	117	117



Connect System India	This Drawing is for Idea Purpose Not for Cutout Purpose	Toll Free	1800-1028-039/011-42474423/33/34
217, RG-1 Rohini - Sector 14, Delhi-110085 India.		Email :	care@connectsystem.in
Website : http://www.connectsystem.in/		Email :	support@connectsystem.in